

# ADINSTRUMENTS CODA<sup>®</sup> MONITOR

## Quick Start

Get set up and start recording



**ADINSTRUMENTS**  
making science easier

# Overview

This guide will help you to quickly set up the ADInstruments CODA® Monitor with LabChart software and its corresponding Device Enabler that allows the CODA® Monitor to stream data into LabChart.

This document was, as far as possible, accurate at the time of release. However, changes may have been made to the software and hardware it describes since then. ADInstruments Pty Ltd reserves the right to alter specifications as required. Late-breaking information may be supplied separately.

Copyright © ADInstruments Pty Ltd, 2000 - 2022. All rights reserved. LabChart is a registered trademark of ADInstruments Pty Ltd. CODA is a registered trademark of Kent Scientific. All other trademarks are the property of their respective owners.

Document Number: 6781-B

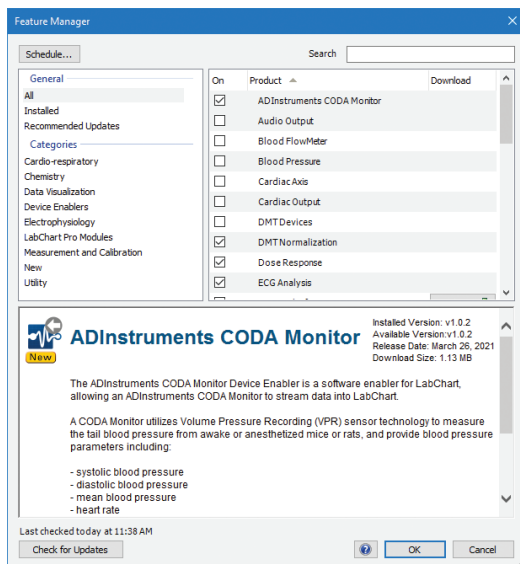
**[www.adinstruments.com](http://www.adinstruments.com)**

# Installation

## Install Software

- 1 Ensure that LabChart for Windows 8.1.18 or later is installed, prior to installing ADInstruments CODA® Monitor Device Enabler. LabChart software can be downloaded through the ADInstruments website:  
<https://www.adinstruments.com/support/labchart#software-downloads>
- 2 Install the ADInstruments CODA® Monitor Device Enabler via
  - USB pen drive (supplied with any Rodent NIBP CODA Monitor Set) connected to your computer's USB drive.
  - Using the Feature Manager in LabChart software and ensuring that it is enabled.
  - Or by downloading the latest CODA® Monitor Device Enabler from Software Downloads on the ADInstruments website:

<https://www.adinstruments.com/support/labchart#software-downloads>



- 3 Exit LabChart software.

# Usage

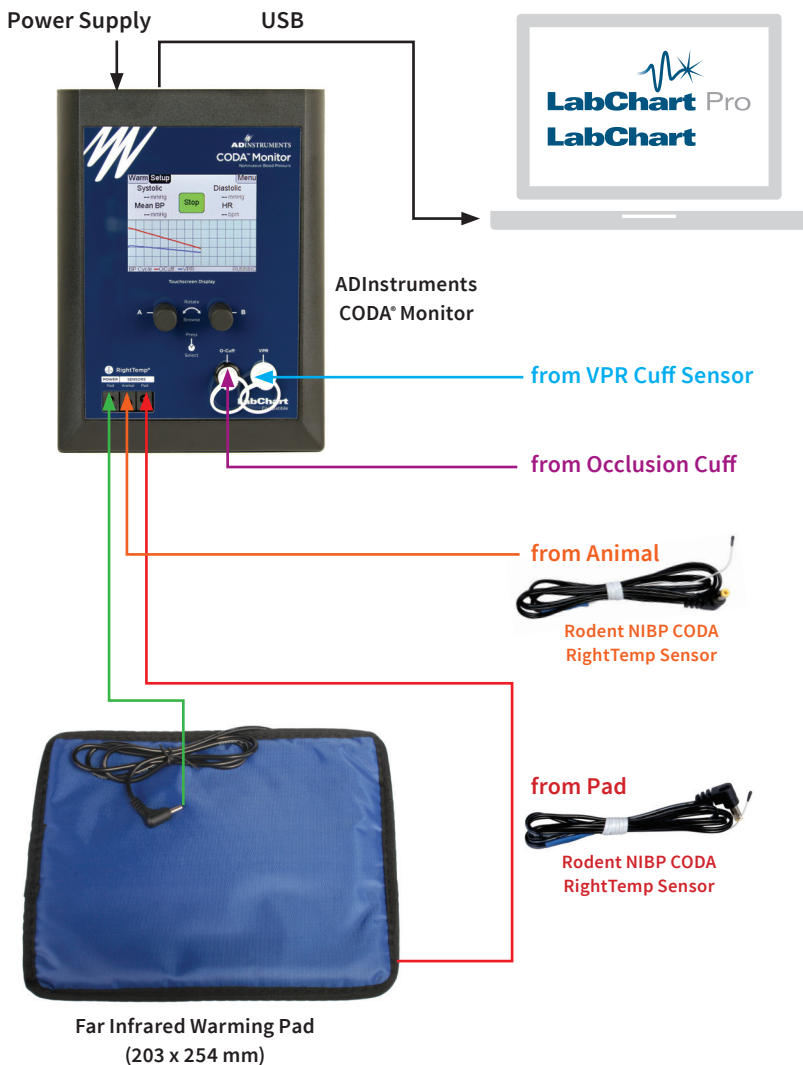
## Conscious Animal Preparation

- 1 Place the corresponding CODA NIBP Rodent Holder on the infrared warming pad. You can use the disposable warming pad covers to prevent soiling the warming pad.
- 2 Place both RightTemp sensors (pad and body temperature probes) beneath the rodent holder. Secure the sensors if necessary.
- 3 Allow the rodent to freely enter the CODA NIBP Rodent Holder with its tail extending beyond the hatch of the holder.
- 4 Slide the corresponding Occlusion Cuff and then Volume Pressure Recording (VPR) Cuff onto the tail of the animal. They should fit closely, but still be able to slide freely along the tail.
- 5 Place a blanket over the setup if required, ensuring that the animal still has access to breathable air.
- 6 Allow the animal to acclimatize. Ensure that the animal has acclimated to the holder and that the tail temperature has reached 35-37 degrees Celsius before taking any measurements.

## Anesthetized Animal Preparation

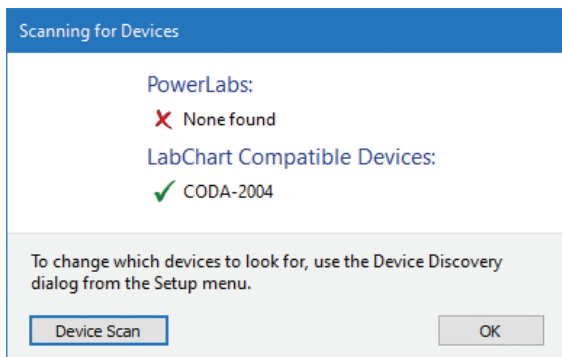
- 1 Prepare the infrared warming pad. You can use the disposable warming pad covers to prevent soiling the warming pad.
- 2 Place the anesthetized animal on the warming pad.
- 3 Place and secure the RightTemp pad sensor beneath the animal.
- 4 Insert the RightTemp body sensor into the rectum of the animal. Secure the sensor if necessary.
- 5 Slide the corresponding Occlusion Cuff and then VPR Cuff onto the tail of the animal. They should fit closely, but still be able to slide freely along the tail.

## Hardware Setup



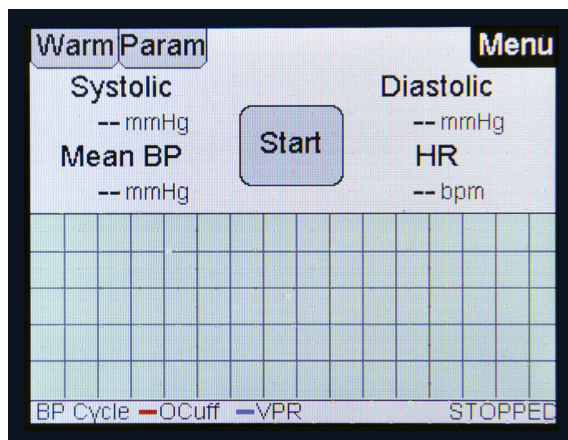
## Recording Setup

- 1 Connect the ADInstruments CODA® Monitor to the computer via supplied USB cable.
- 2 Connect the leads of the Occlusion Cuff, VPR Cuff Sensor, RightTemp sensors and warming pad to the ADInstruments CODA® Monitor.
- 3 Connect the ADInstruments CODA® Monitor to mains power via supplied power cable.
- 4 The ADInstruments CODA® Monitor will turn on with its touchscreen displaying a start display that is on standby until successful recognition by LabChart software.
- 5 Double click on LabChart icon to open LabChart software.
- 6 Wait for LabChart's device scan to successfully recognised the CODA® Monitor, which is represented by a green tick next to CODA® Monitor.



- 7 Select the CODA® Monitor device and click the **OK** button.
- 8 Open a New document in LabChart software, which will automatically setup ten recording channels in Chart View.

- 9 You should also see that the touchscreen automatically changes to its default recording display with **START** button in its center.



- 10 Further setup details can be made via the Menu and Warm buttons on the touch screen display, which includes:
- Animal type
  - Interval
  - Temperature setup
  - Deflation time
  - Set parameter ranges
  - CODA® Monitor Tests
- 11 Return back to the default recording display once all the desired changes are confirmed.
- 12 You can start recording by first clicking the Chart View Start button in LabChart software and then pressing Start on the ADInstruments CODA® Monitor touch screen.
- 13 The button will automatically change to a **STOP** button allowing you to stop measurements at any time.



[adinstruments.com](http://adinstruments.com)

6781